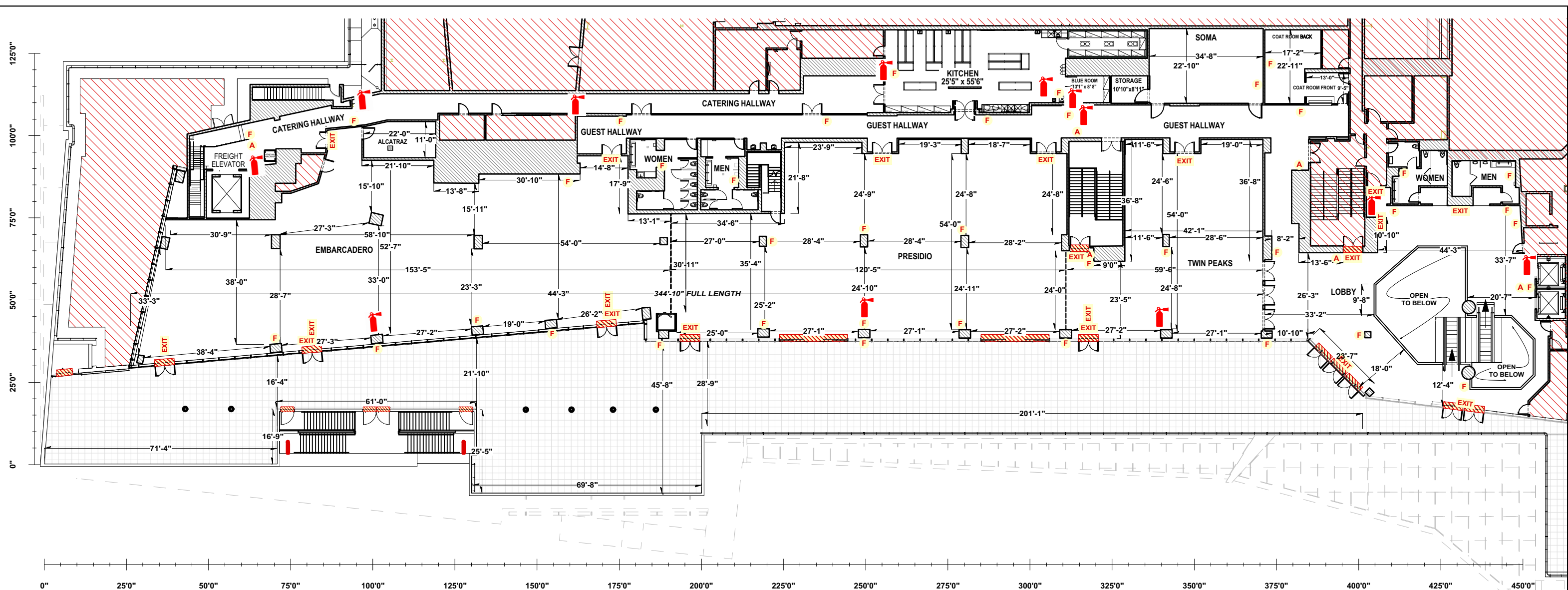


- GENERAL NOTES:
- ALL FLOOR PLANS SUBJECT TO FIRE MARSHAL APPROVAL
 - NO LOADING THROUGH GUEST HALLWAY
 - MUST KEEP CLEAR PATH OF MINIMUM 6' TO ALL EXITS
 - ALL EXIT SIGNS & FIRE EQUIPMENT MUST BE VISIBLE

CITY VIEW
at METREON

CITY VIEW
FULL VENUE - BLANK

EVENT:	
VENUE: CITY VIEW at METREON	
SCALE: 1:340	SHEET: A-1.0
PRINT SIZE: 11x17	



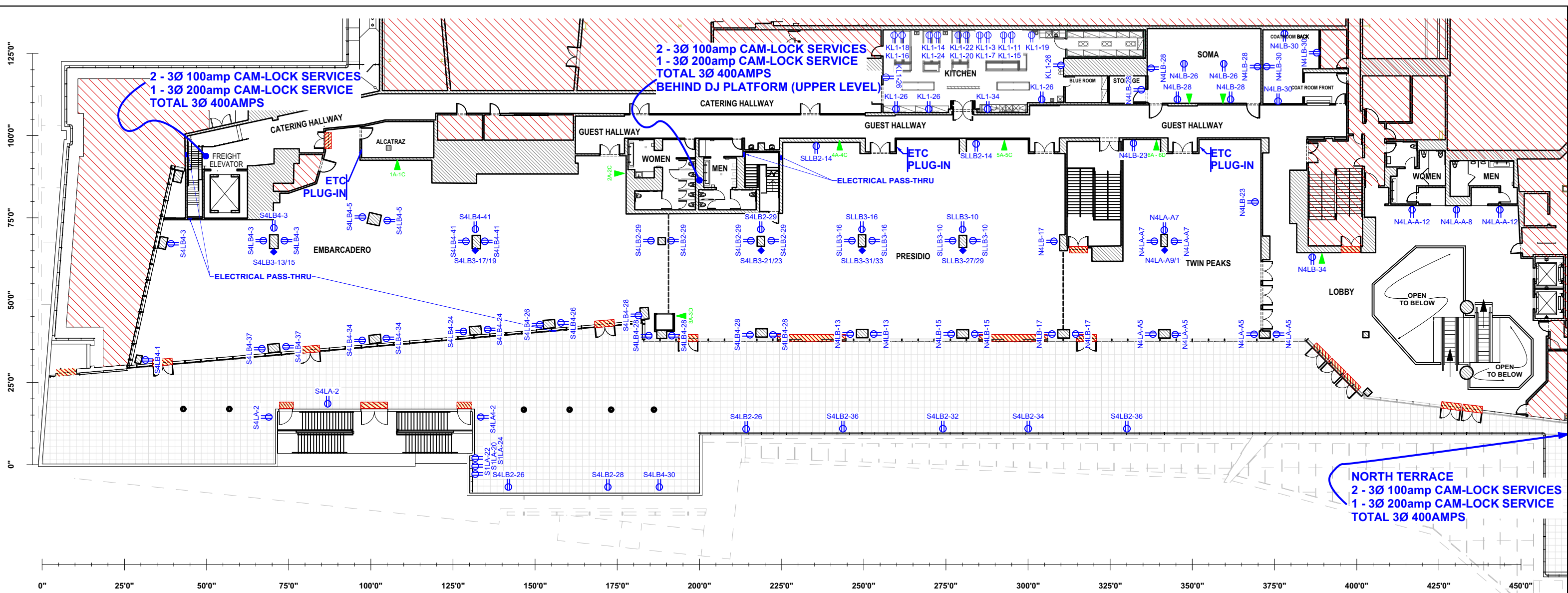
SAFETY / FIRE LEGEND	
	EXIT SIGN
	FIRE EXTINGUISHER
	FIRE ALARM CALL BOX
	FIRE ALARM STROBE

- GENERAL NOTES:
- ALL FLOOR PLANS SUBJECT TO FIRE MARSHAL APPROVAL
 - NO LOADING THROUGH GUEST HALLWAY
 - MUST KEEP CLEAR PATH OF MINIMUM 6' TO ALL EXITS
 - ALL EXIT SIGNS & FIRE EQUIPMENT MUST BE VISIBLE

CITY VIEW
at METREON

CITY VIEW
FULL VENUE - DIMENSIONS

EVENT:	
VENUE:	CITY VIEW at METREON
SCALE:	1:340
PRINT SIZE:	11x17
SHEET:	A-1.1



ELECTRIC / DATA LEGEND	
	DATA CONNECTION PORTS
	20amp DUPLEX OUTLET
	L6-30 208v TWIST LOCK OUTLET

ELECTRICAL NOTES

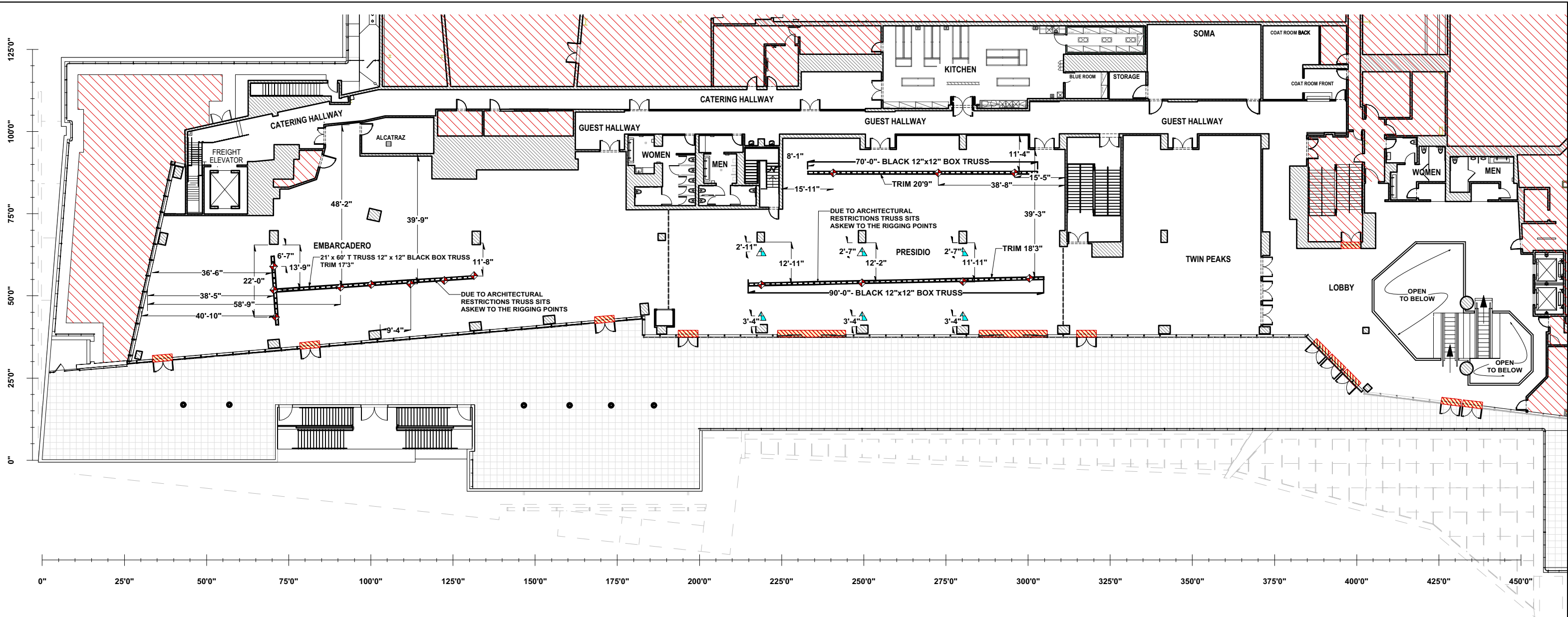
- CAMLOCK SERVICES**
 - USE OF CAMLOCK SERVICE MUST BE ARRANGED WITH VENUE STAFF PRIOR TO INSTALL VIA THE PRODUCTION QUESTIONNAIRE
 - ALL CAMLOCKS ARE PANEL MOUNTED FEMALE CONNECTIONS (5-WIRE SYSTEM; GROUND & NEUTRAL ARE NOT "TURNED")
- LIGHTING CONTROL PLUG-IN INTERFACE (ETC PLUG-IN)**
 - CONNECTION TO SYSTEM IS RJ-45 (ETHERNET)
 - SYSTEM PROTOCOL IS ANSI E1.31 sACN (Scanning ACN)
 - USE 10.101.90.XXX SECTION OF IP RANGE
 - ANY OF THE 3 PORTS AROUND THE VENUE CAN CONTROL THE WHOLE SYSTEM



- GENERAL NOTES:**
- ALL FLOOR PLANS SUBJECT TO FIRE MARSHAL APPROVAL
 - NO LOADING THROUGH GUEST HALLWAY
 - MUST KEEP CLEAR PATH OF MINIMUM 6' TO ALL EXITS
 - ALL EXIT SIGNS & FIRE EQUIPMENT MUST BE VISIBLE

CITY VIEW
at METREON

CITY VIEW
FULL VENUE - ELECTRICAL & DATA

EVENT:	
VENUE: CITY VIEW at METREON	
SCALE: 1:340	SHEET: A-1.2
PRINT SIZE: 11x17	



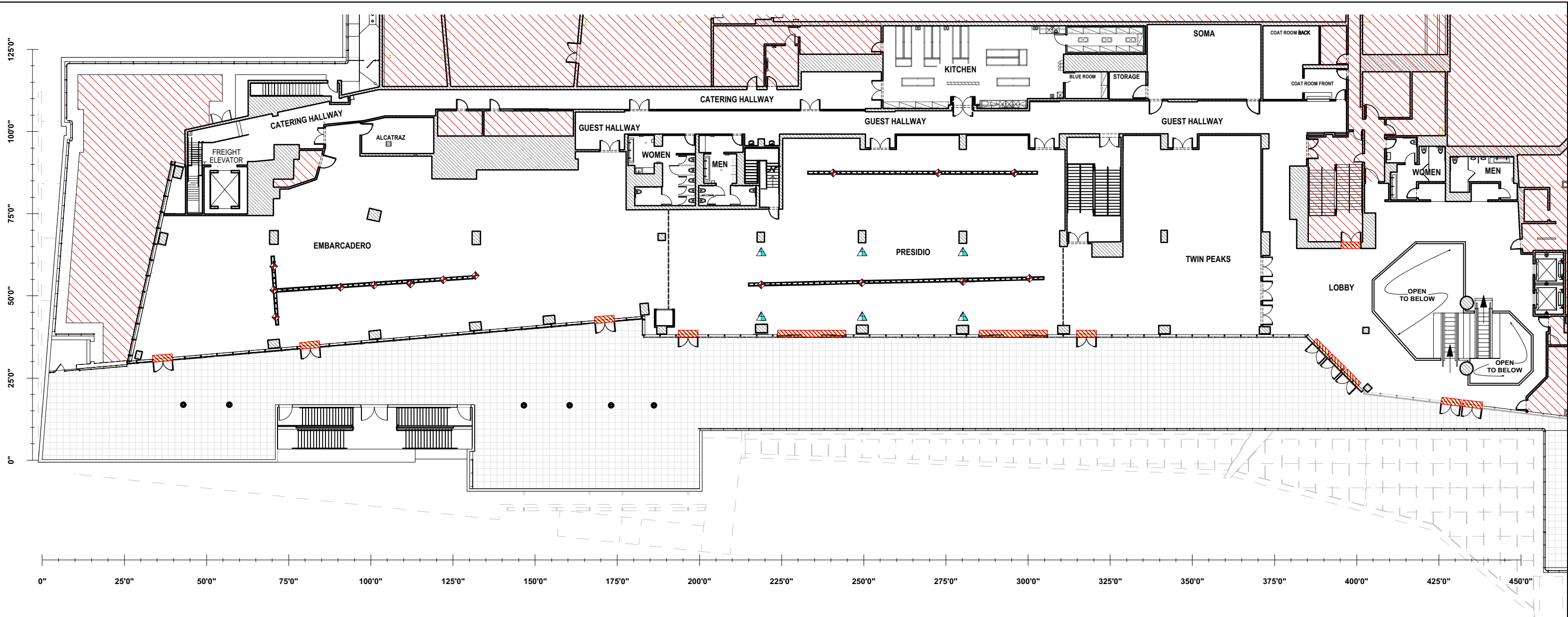
RIGGING LEGEND	
	1/4 TON MOTOR (DOUBLE REEVED)
	RIGGING POINT

- GENERAL NOTES:
- ALL FLOOR PLANS SUBJECT TO FIRE MARSHAL APPROVAL
 - NO LOADING THROUGH GUEST HALLWAY
 - MUST KEEP CLEAR PATH OF MINIMUM 6' TO ALL EXITS
 - ALL EXIT SIGNS & FIRE EQUIPMENT MUST BE VISIBLE

CITY VIEW
at METREON

CITY VIEW
FULL VENUE - RIGGING & TRUSS

EVENT:	
VENUE:	CITY VIEW at METREON
SCALE:	1:340
PRINT SIZE:	11x17
SHEET:	A-1.3



RIGGING LEGEND	
	1/4 TON MOTOR (DOUBLE REEVED)
	RIGGING POINT

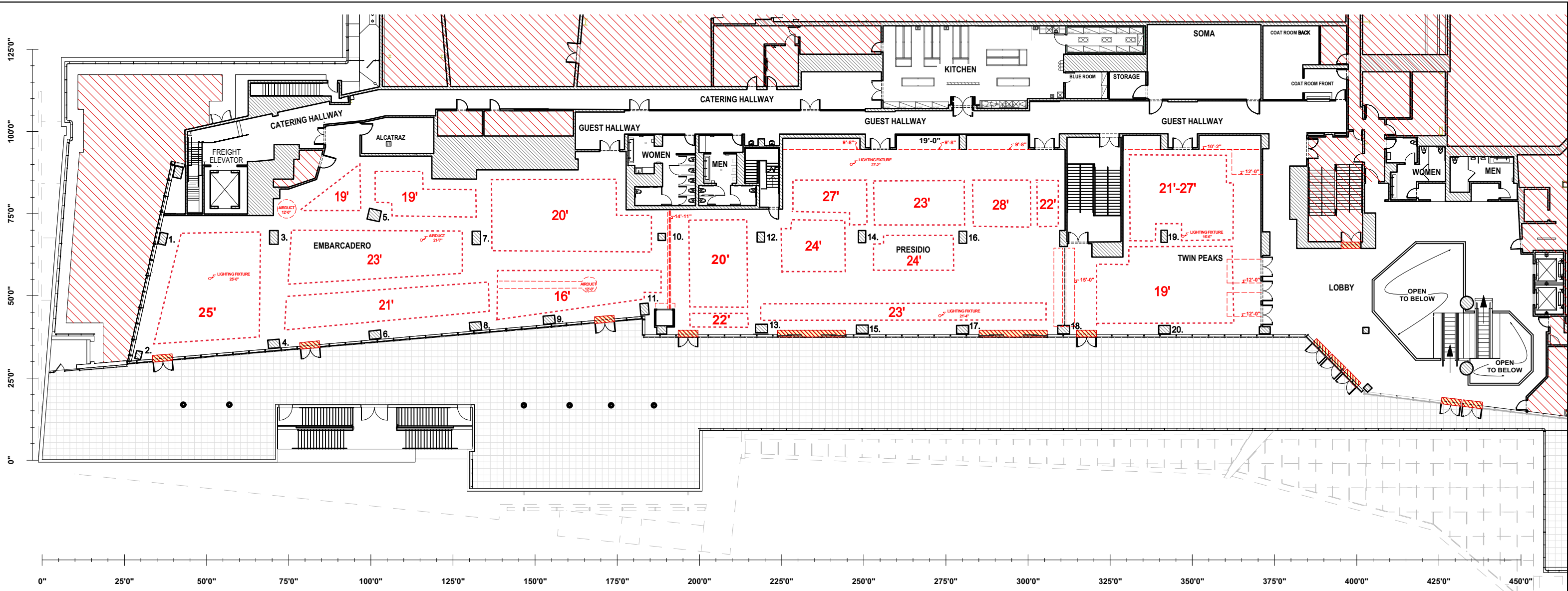
- GENERAL NOTES:
- ALL FLOOR PLANS SUBJECT TO FIRE MARSHAL APPROVAL
 - NO LOADING THROUGH GUEST HALLWAY
 - MUST KEEP CLEAR PATH OF MINIMUM 6' TO ALL EXITS
 - ALL EXIT SIGNS & FIRE EQUIPMENT MUST BE VISIBLE

CITY VIEW
at METREON

CITY VIEW

FULL VENUE - RIGGING & TRUSS (BLANK)

EVENT:	
VENUE:	CITY VIEW at METREON
SCALE:	1:340
PRINT SIZE:	11x17
SHEET:	A-1.4



COLUMN TABLE

1. 42.25" x 27.75"	11. 42.25" x 30.25"
2. 32.75" x 28"	12. 35.75" x 26.75"
3. 50.75" x 32"	13. 30" x 42"
4. 30.25" x 42.25"	14. 44.5" x 27.75"
5. 40" x 45"	15. 30.25" x 42.25"
6. 30.5" x 42.25"	16. 44.5" x 27.75"
7. 48.5" x 30.5"	17. 30.25" x 42.5"
8. 30.5" x 42"	18. 30.25" x 42.25"
9. 30.25" x 42.25"	19. 44.5" x 23.75"
10. 25.5" x 27"	20. 30" X 42.5"

LEGEND: L #. L" x W"

W

HEIGHT LEGEND*

	AVERAGE APPROXIMATE AREA HEIGHT
	SPECIFIC AREA HEIGHT
	SPECIFIC ITEM HEIGHT

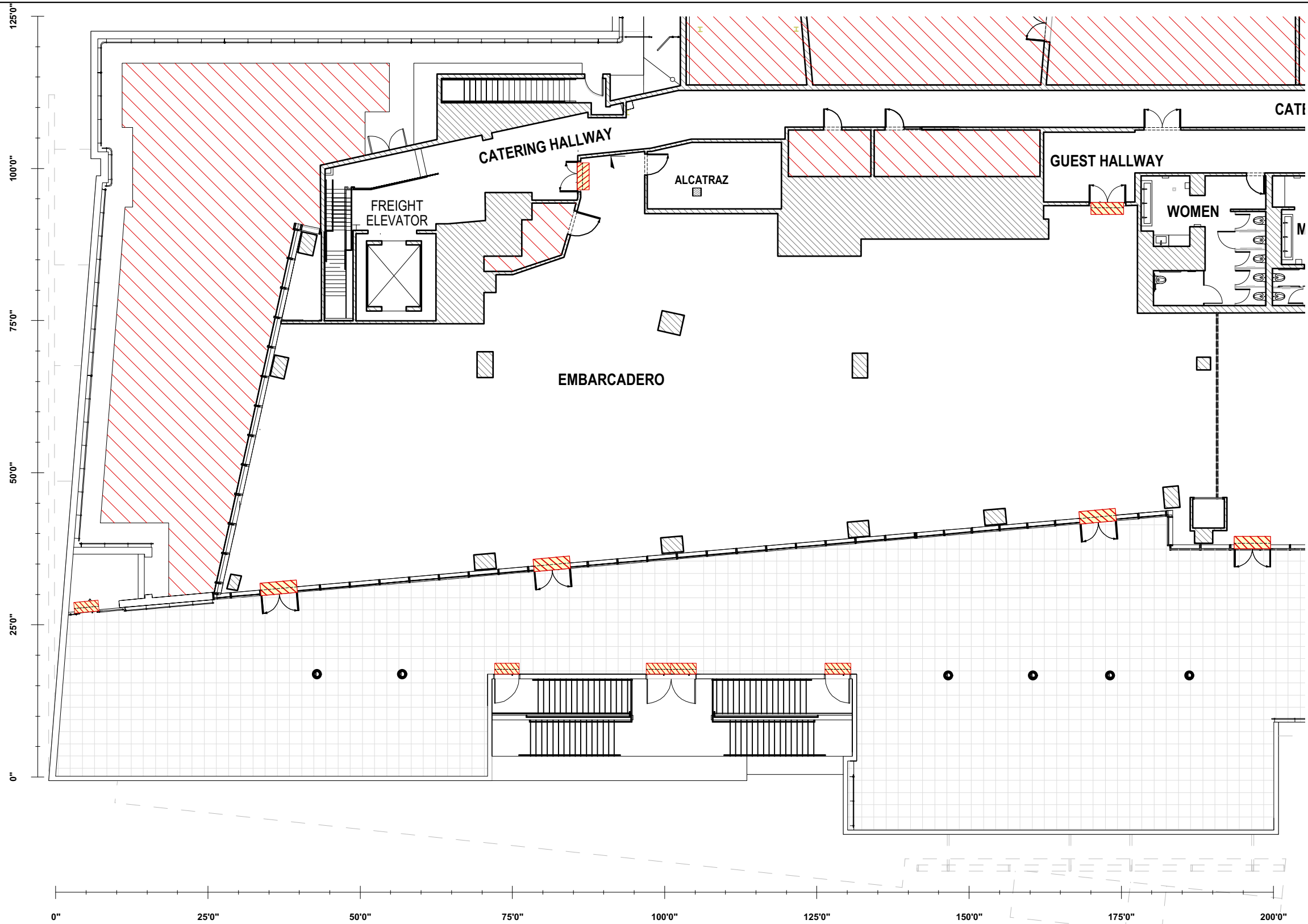
*HEIGHTS/ITEMS DEPICTED ARE NOT GUARANTEED FOR EXACT ACCURACY OR PLACEMENT AND SHOULD ONLY BE USED AS A GENERAL GUIDELINE FOR WHAT TO EXPECT INSIDE THE VENUE

- GENERAL NOTES:**
- ALL FLOOR PLANS SUBJECT TO FIRE MARSHAL APPROVAL
 - NO LOADING THROUGH GUEST HALLWAY
 - MUST KEEP CLEAR PATH OF MINIMUM 6' TO ALL EXITS
 - ALL EXIT SIGNS & FIRE EQUIPMENT MUST BE VISIBLE

CITY VIEW
at METREON

CITY VIEW
FULL VENUE - COLUMNS & HEIGHT

EVENT:	
VENUE:	CITY VIEW at METREON
SCALE:	1:340
PRINT SIZE:	11x17
SHEET:	A-1.5

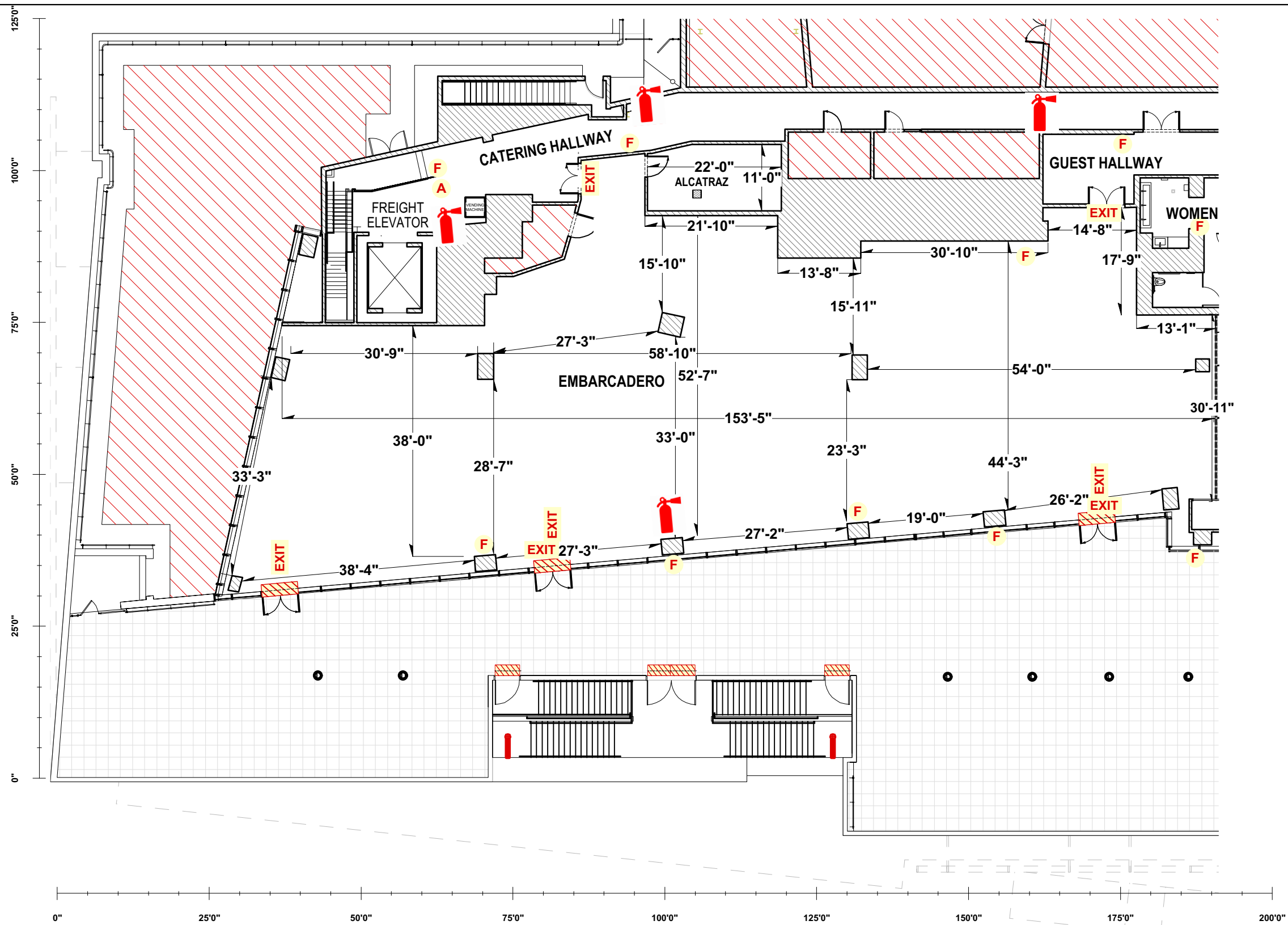


- GENERAL NOTES:**
- ALL FLOOR PLANS SUBJECT TO FIRE MARSHAL APPROVAL
 - NO LOADING THROUGH GUEST HALLWAY
 - MUST KEEP CLEAR PATH OF MINIMUM 6' TO ALL EXITS
 - ALL EXIT SIGNS & FIRE EQUIPMENT MUST BE VISIBLE

CITY VIEW
at METREON

CITY VIEW
EMBARCADERO ROOM - BLANK

EVENT:	
VENUE: CITY VIEW at METREON	
SCALE: 1:215	SHEET: E-1.0
PRINT SIZE: 11x17	



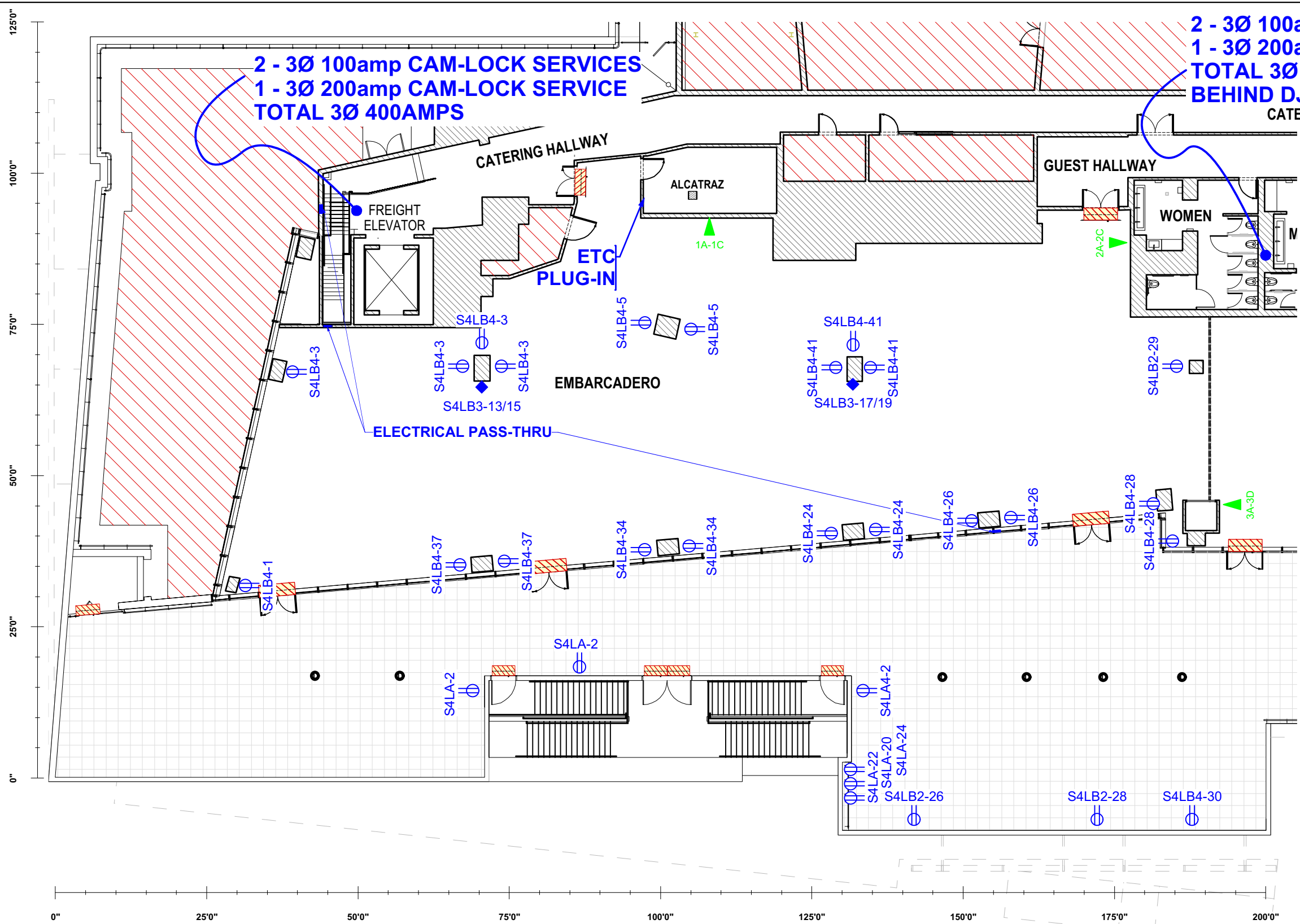
SAFETY / FIRE LEGEND	
	EXIT SIGN
	FIRE EXTINGUISHER
	FIRE ALARM CALL BOX
	FIRE ALARM STROBE

- GENERAL NOTES:**
- ALL FLOOR PLANS SUBJECT TO FIRE MARSHAL APPROVAL
 - NO LOADING THROUGH GUEST HALLWAY
 - MUST KEEP CLEAR PATH OF MINIMUM 6' TO ALL EXITS
 - ALL EXIT SIGNS & FIRE EQUIPMENT MUST BE VISIBLE

CITY VIEW
at METREON

CITY VIEW
EMBARCADERO ROOM - DIMENSIONS

EVENT:	
VENUE:	CITY VIEW at METREON
SCALE:	1:215
PRINT SIZE:	11x17
SHEET:	E-1.1



**2 - 3Ø 100amp CAM-LOCK SERVICES
1 - 3Ø 200amp CAM-LOCK SERVICE
TOTAL 3Ø 400AMPS**

**2 - 3Ø 100amp CAM-LOCK SERVICES
1 - 3Ø 200amp CAM-LOCK SERVICE
TOTAL 3Ø 400AMPS
BEHIND DJ PLATFORM (UPPER LEVEL)**

ELECTRIC / DATA LEGEND	
	DATA CONNECTION PORTS
	20amp DUPLEX OUTLET
	L6-30 208v TWIST LOCK OUTLET

ELECTRICAL NOTES

- CAMLOCK SERVICES**
 - USE OF CAMLOCK SERVICE MUST BE ARRANGED WITH VENUE STAFF PRIOR TO INSTALL VIA THE PRODUCTION QUESTIONNAIRE
 - ALL CAMLOCKS ARE PANEL MOUNTED FEMALE CONNECTIONS (5-WIRE SYSTEM; GROUND & NEUTRAL ARE NOT "TURNED")
- LIGHTING CONTROL PLUG-IN INTERFACE (ETC PLUG-IN)**
 - CONNECTION TO SYSTEM IS RJ-45 (ETHERNET)
 - SYSTEM PROTOCOL IS ANSI E1.31 sACN (Scanning ACN)
 - USE 10.101.90.XXX SECTION OF IP RANGE
 - ANY OF THE 3 PORTS AROUND THE VENUE CAN CONTROL THE WHOLE SYSTEM

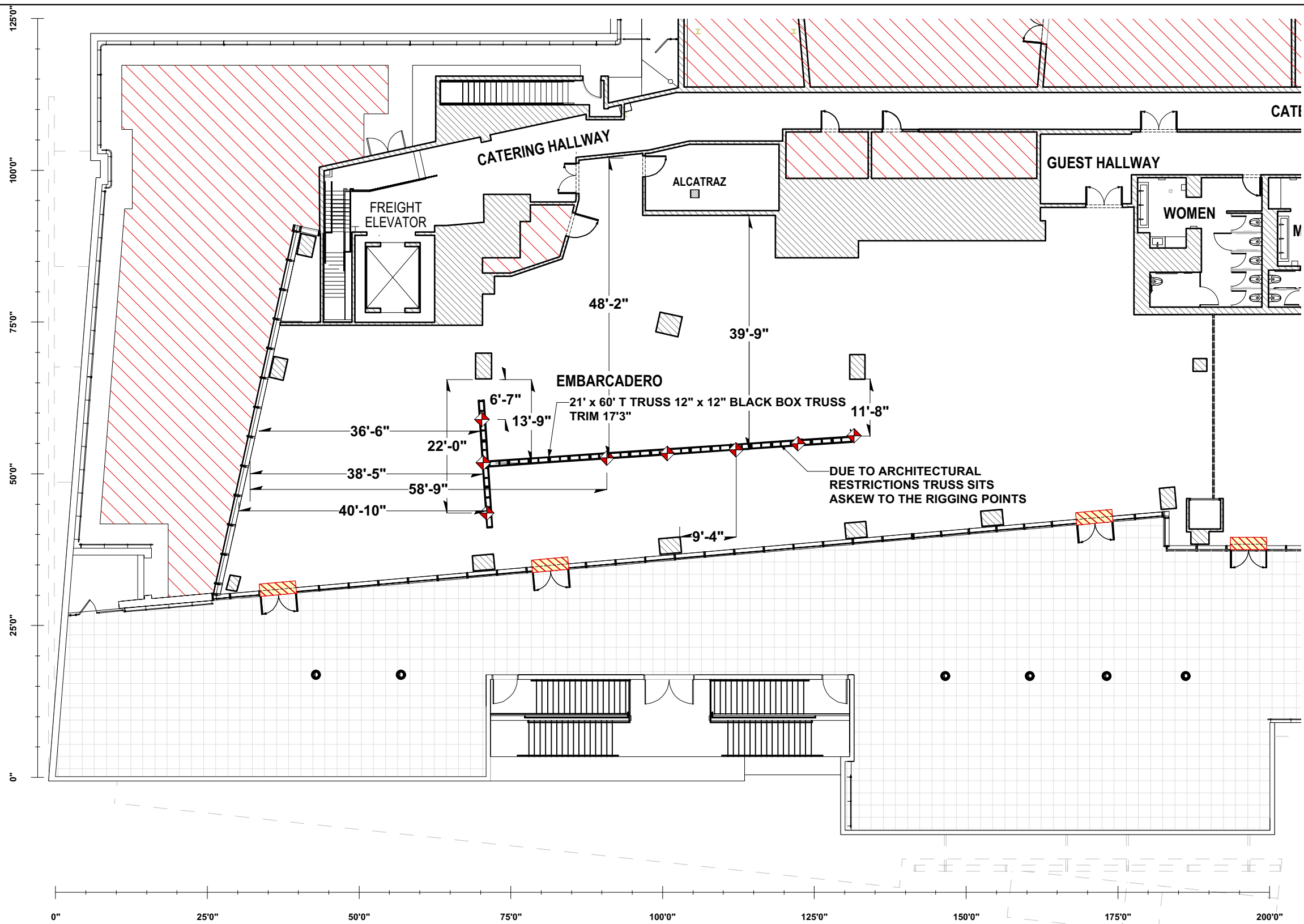
- GENERAL NOTES:**
- ALL FLOOR PLANS SUBJECT TO FIRE MARSHAL APPROVAL
 - NO LOADING THROUGH GUEST HALLWAY
 - MUST KEEP CLEAR PATH OF MINIMUM 6' TO ALL EXITS
 - ALL EXIT SIGNS & FIRE EQUIPMENT MUST BE VISIBLE



CITY VIEW
at METREON

CITY VIEW

EMBARCADERO ROOM - ELECTRICAL & DATA

EVENT:	
VENUE:	CITY VIEW at METREON
SCALE:	1:215
PRINT SIZE:	11x17
SHEET:	E-1.2



RIGGING LEGEND	
	1/4 TON MOTOR (DOUBLE REEVED)
	RIGGING POINT

- GENERAL NOTES:**
- ALL FLOOR PLANS SUBJECT TO FIRE MARSHAL APPROVAL
 - NO LOADING THROUGH GUEST HALLWAY
 - MUST KEEP CLEAR PATH OF MINIMUM 6' TO ALL EXITS
 - ALL EXIT SIGNS & FIRE EQUIPMENT MUST BE VISIBLE

CITY VIEW
at METREON

CITY VIEW

EMBARCADERO ROOM - RIGGING & TRUSS

EVENT:	
VENUE:	CITY VIEW at METREON
SCALE:	1:215
PRINT SIZE:	11x17
SHEET:	E-1.3



RIGGING LEGEND	
	1/4 TON MOTOR (DOUBLE REEVED)
	RIGGING POINT

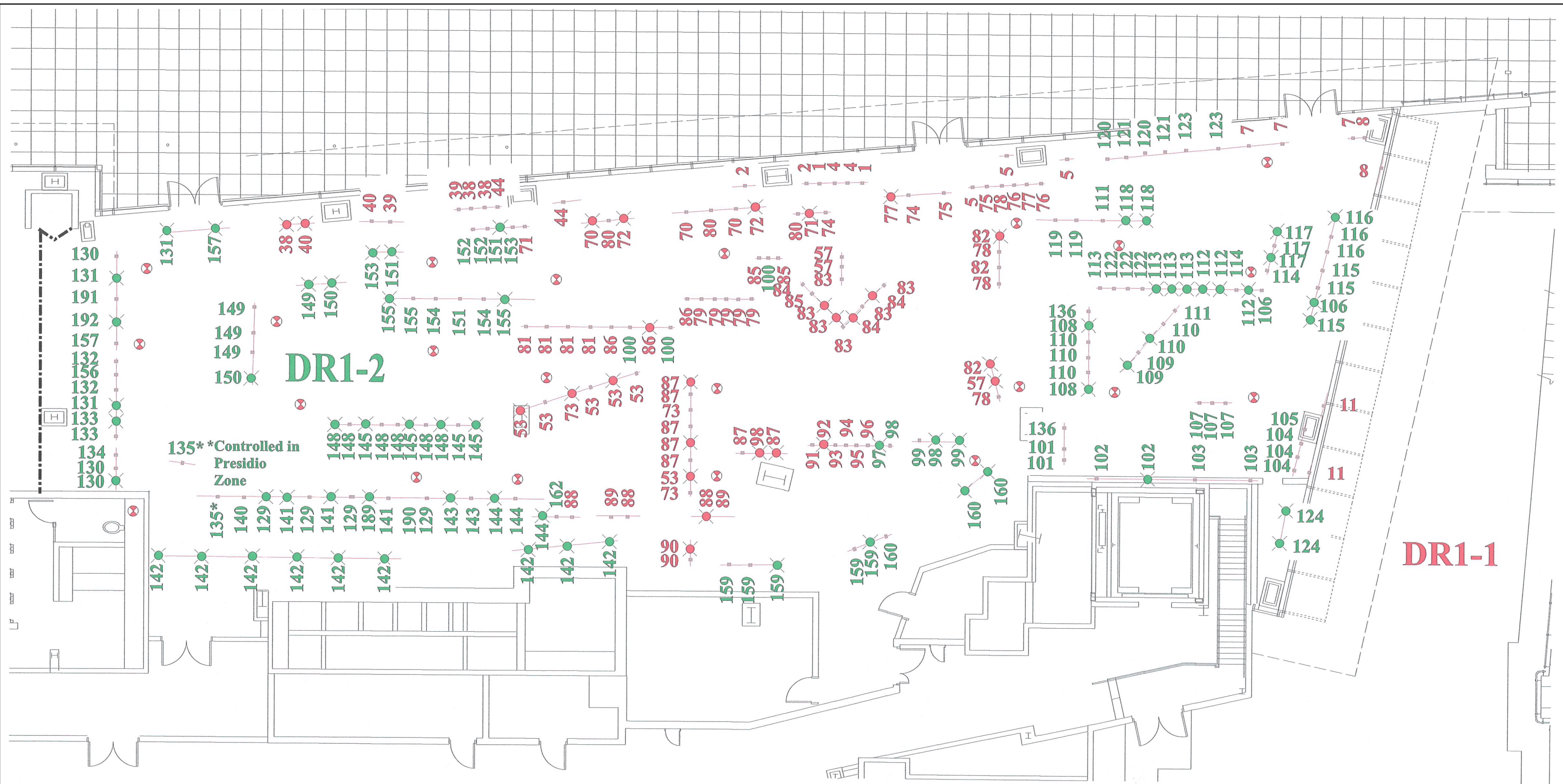
- GENERAL NOTES:**
- ALL FLOOR PLANS SUBJECT TO FIRE MARSHAL APPROVAL
 - NO LOADING THROUGH GUEST HALLWAY
 - MUST KEEP CLEAR PATH OF MINIMUM 6' TO ALL EXITS
 - ALL EXIT SIGNS & FIRE EQUIPMENT MUST BE VISIBLE

CITY VIEW
at METREON

CITY VIEW

EMBARCADERO ROOM - RIGGING & TRUSS BLANK

EVENT:	
VENUE:	CITY VIEW at METREON
SCALE:	1:215
PRINT SIZE:	11x17
SHEET:	E-1.4



DR1-2

DR1-1

135* *Controlled in Presidio Zone

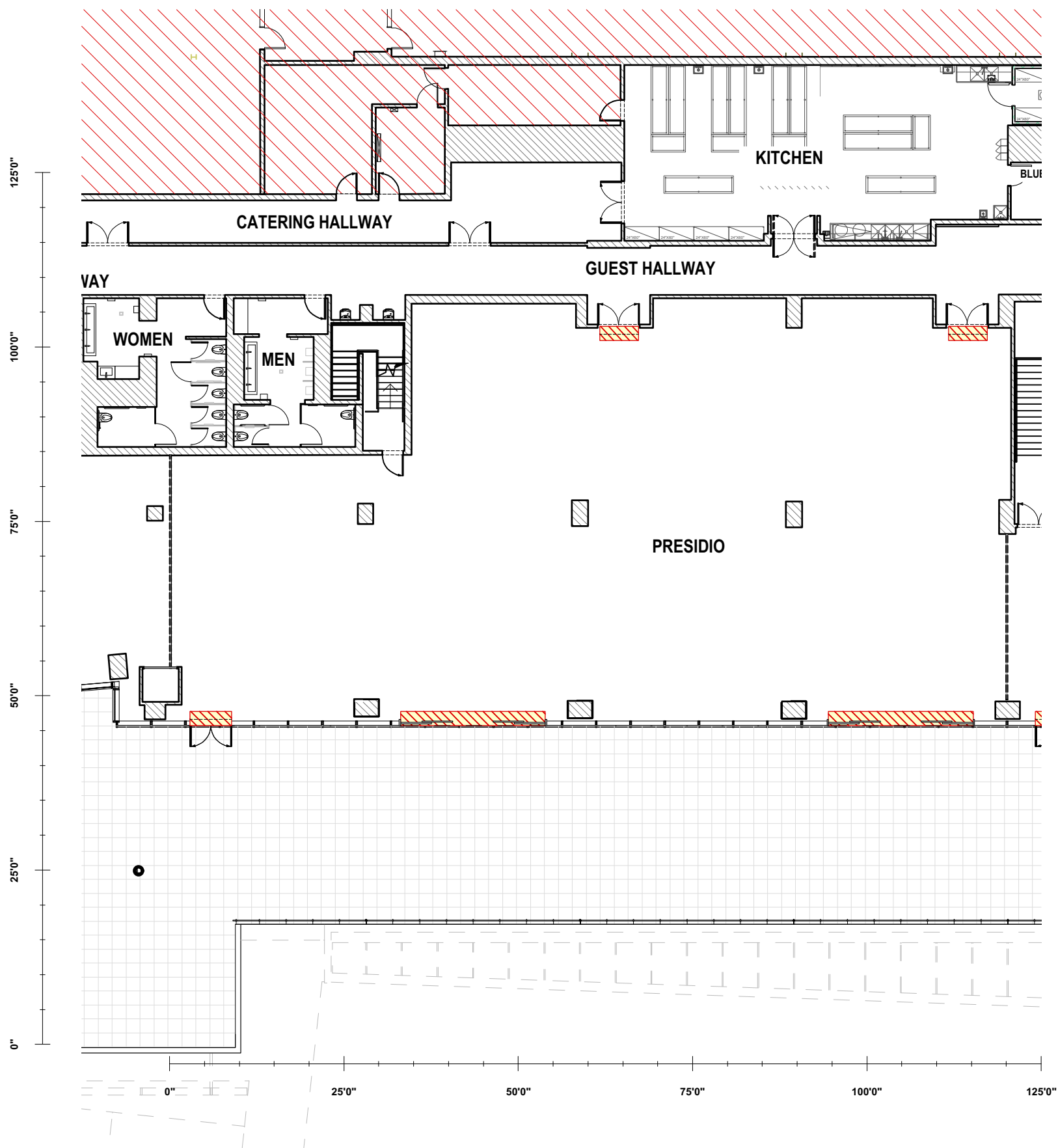
⊗ EMERGENCY LIGHT ONLY

CITY VIEW
at METREON

CITY VIEW

EMBARCADERO ROOM - LIGHTING FIXTURES

EVENT:	
VENUE:	CITY VIEW at METREON
SCALE:	1:340
PRINT SIZE:	11x17
SHEET:	E-1.5

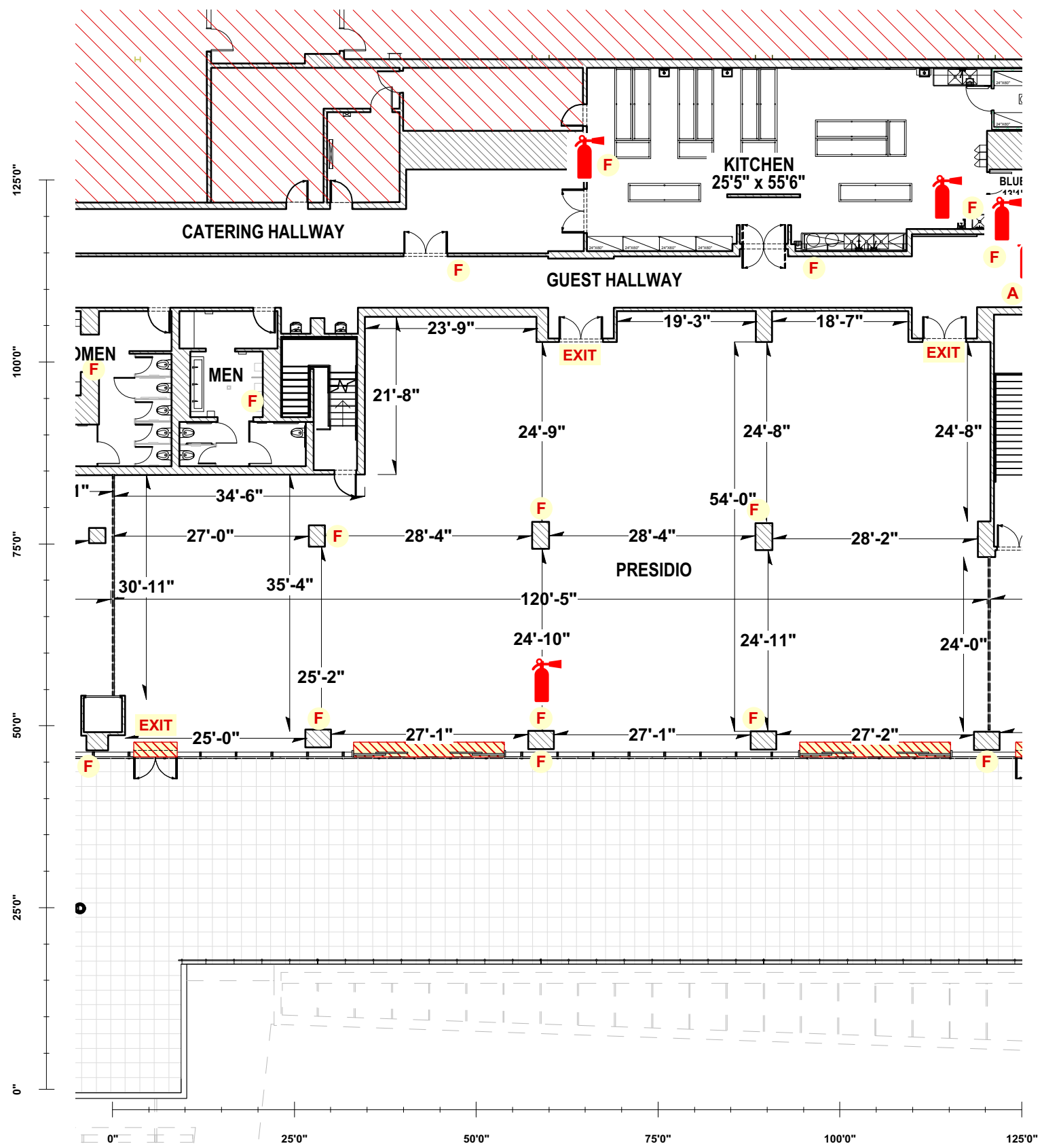


- GENERAL NOTES:
- ALL FLOOR PLANS SUBJECT TO FIRE MARSHAL APPROVAL
 - NO LOADING THROUGH GUEST HALLWAY
 - MUST KEEP CLEAR PATH OF MINIMUM 6' TO ALL EXITS
 - ALL EXIT SIGNS & FIRE EQUIPMENT MUST BE VISIBLE

CITY VIEW
at METREON

CITY VIEW
PRESIDIO ROOM - BLANK

EVENT:	
VENUE: CITY VIEW at METREON	
SCALE: 1:215	SHEET: P-1.0
PRINT SIZE: 11x17	



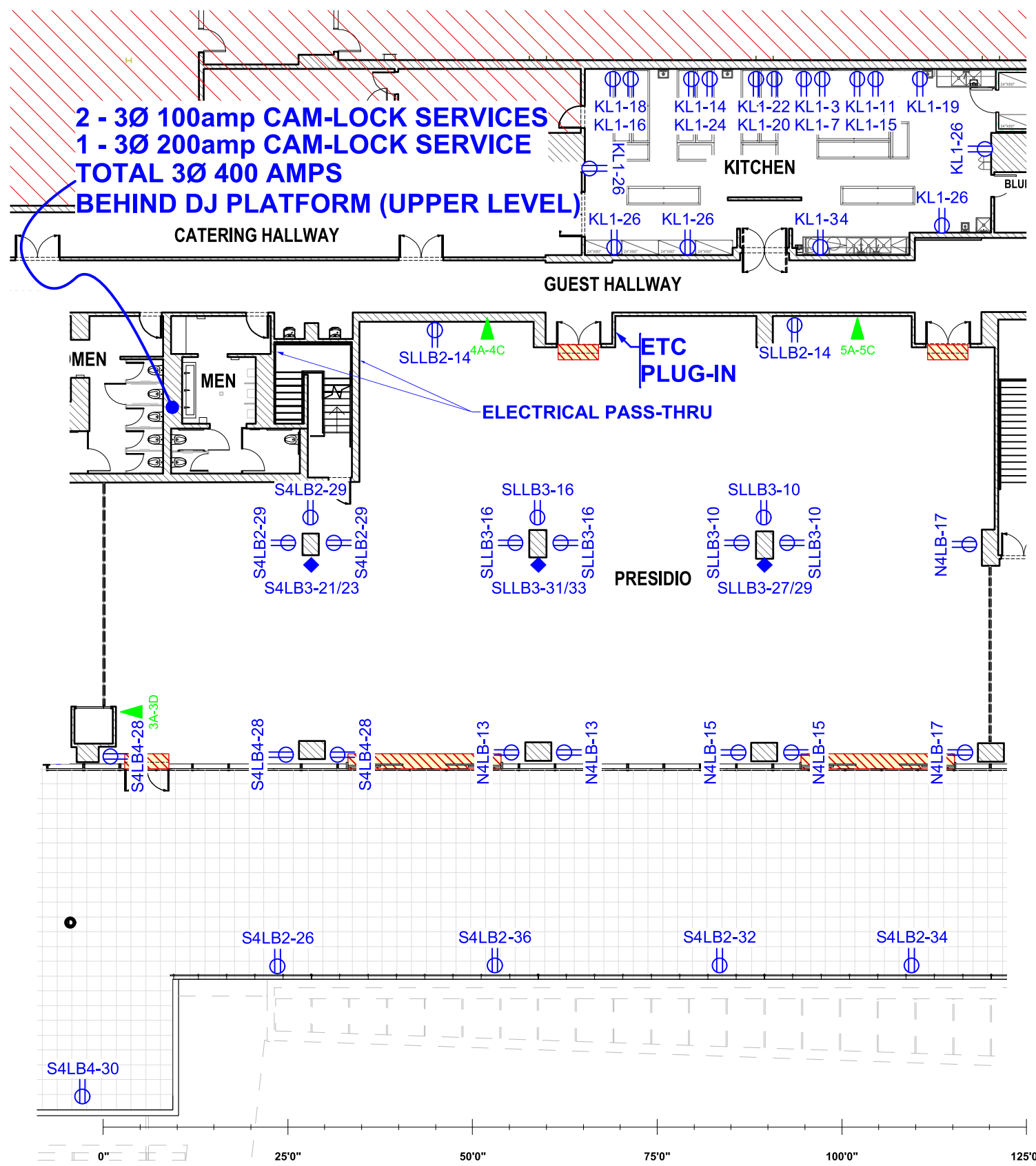
SAFETY / FIRE LEGEND	
EXIT	EXIT SIGN
	FIRE EXTINGUISHER
A	FIRE ALARM CALL BOX
F	FIRE ALARM STROBE

- GENERAL NOTES:
- ALL FLOOR PLANS SUBJECT TO FIRE MARSHAL APPROVAL
 - NO LOADING THROUGH GUEST HALLWAY
 - MUST KEEP CLEAR PATH OF MINIMUM 6' TO ALL EXITS
 - ALL EXIT SIGNS & FIRE EQUIPMENT MUST BE VISIBLE

CITY VIEW
at METREON

CITY VIEW
PRESIDIO ROOM - DIMENSIONS

EVENT:	
VENUE: CITY VIEW at METREON	
SCALE: 1:215	SHEET: P-1.1
PRINT SIZE: 11x17	



ELECTRIC / DATA LEGEND	
	DATA CONNECTION PORTS
	20amp DUPLEX OUTLET
	L6-30 208v TWIST LOCK OUTLET

- ELECTRICAL NOTES**
- CAMLOCK SERVICES**
 - USE OF CAMLOCK SERVICE MUST BE ARRANGED WITH VENUE STAFF PRIOR TO INSTALL VIA THE PRODUCTION QUESTIONNAIRE
 - ALL CAMLOCKS ARE PANEL MOUNTED FEMALE CONNECTIONS (5-WIRE SYSTEM; GROUND & NEUTRAL ARE NOT "TURNED")
 - LIGHTING CONTROL PLUG-IN INTERFACE (ETC PLUG-IN)**
 - CONNECTION TO SYSTEM IS RJ-45 (ETHERNET)
 - SYSTEM PROTOCOL IS ANSI E1.31 sACN (Scanning ACN)
 - USE 10.101.90.XXX SECTION OF IP RANGE
 - ANY OF THE 3 PORTS AROUND THE VENUE CAN CONTROL THE WHOLE SYSTEM

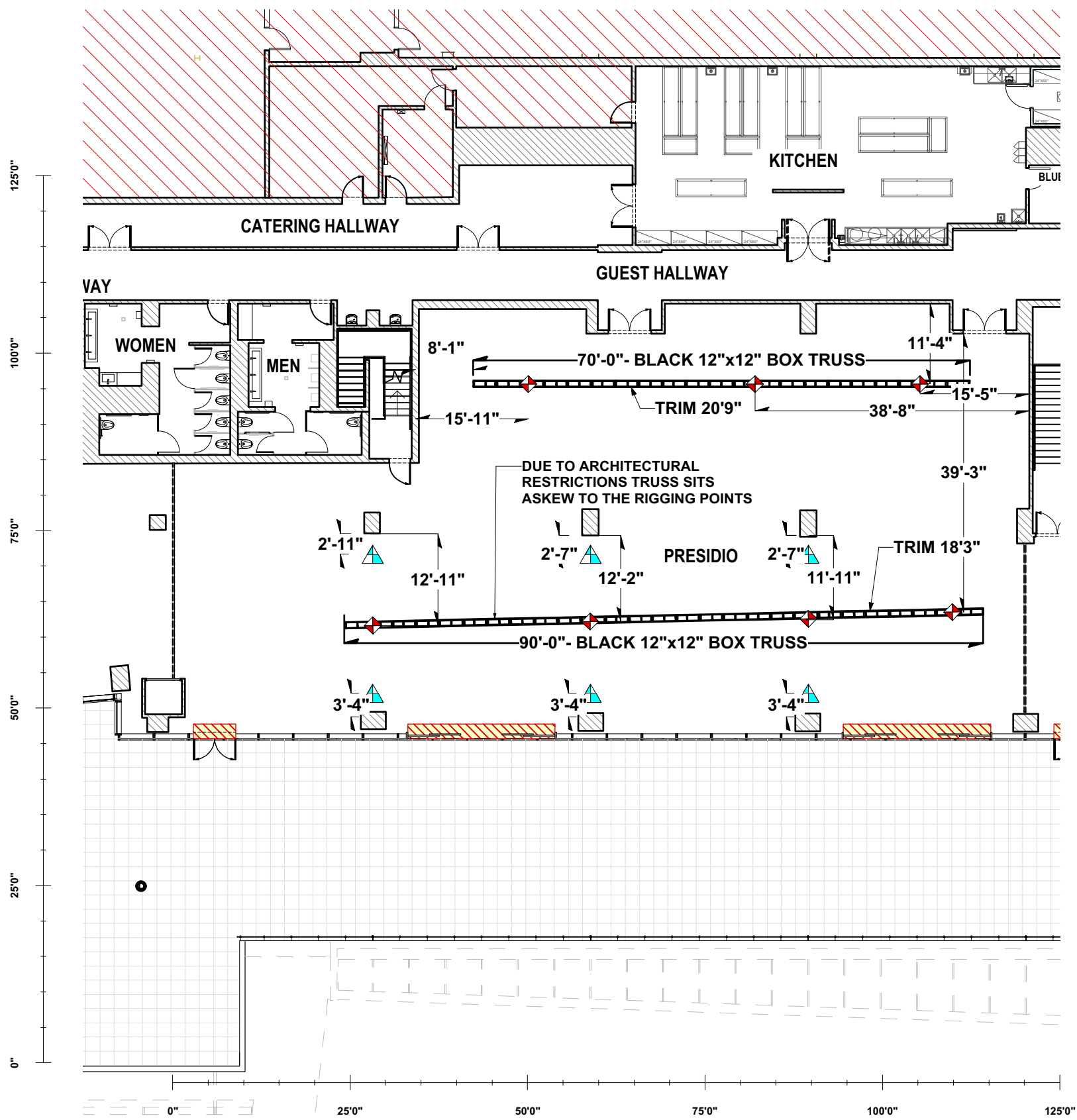
- GENERAL NOTES:**
- ALL FLOOR PLANS SUBJECT TO FIRE MARSHAL APPROVAL
 - NO LOADING THROUGH GUEST HALLWAY
 - MUST KEEP CLEAR PATH OF MINIMUM 6' TO ALL EXITS
 - ALL EXIT SIGNS & FIRE EQUIPMENT MUST BE VISIBLE

CITY VIEW
at METREON

CITY VIEW

PRESIDIO ROOM - ELECTRICAL & DATA

EVENT:	
VENUE: CITY VIEW at METREON	
SCALE: 1:215	SHEET: P-1.2
PRINT SIZE: 11x17	



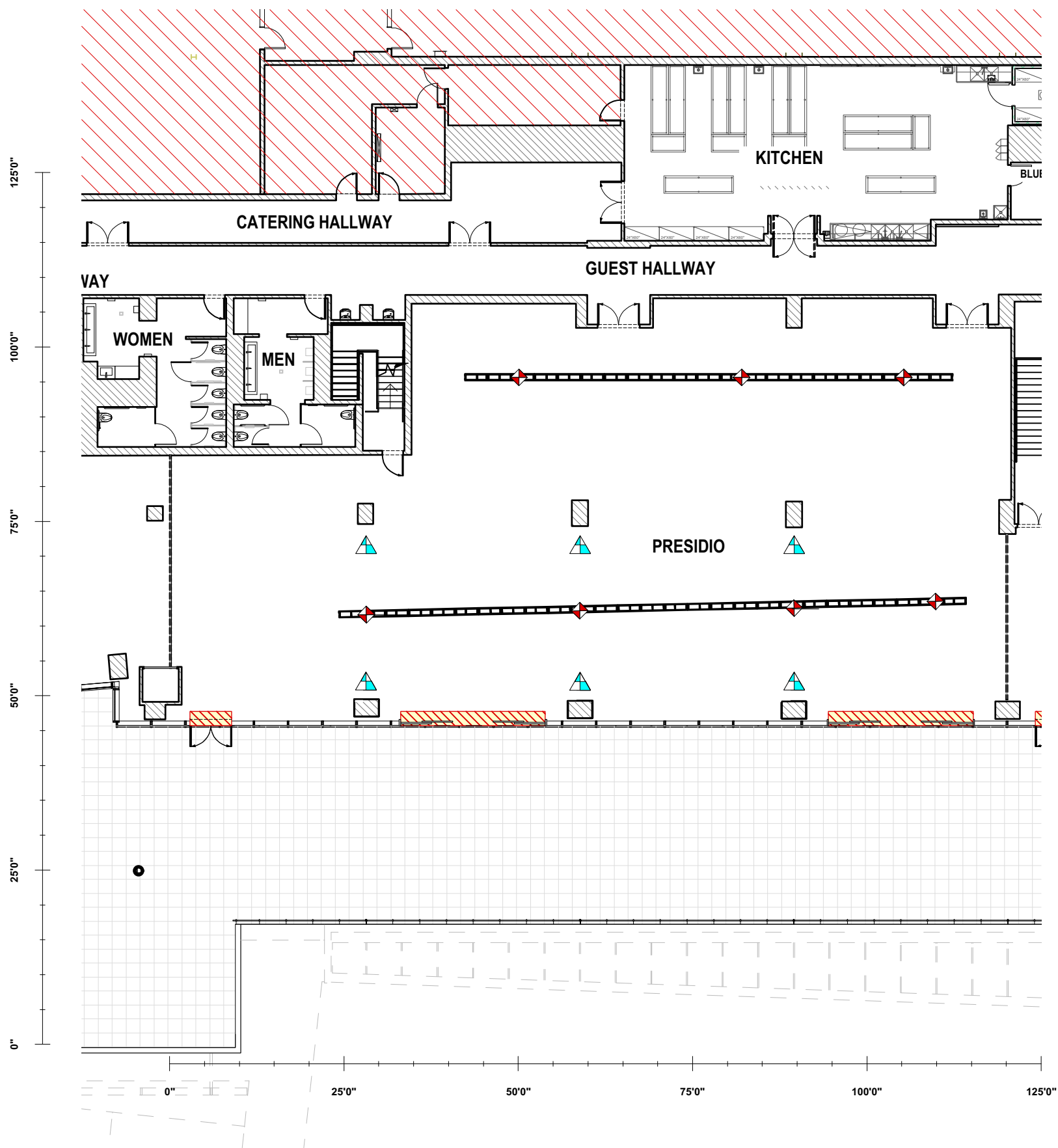
RIGGING LEGEND	
	1/4 TON MOTOR (DOUBLE
	REEVED) RIGGING POINT

- GENERAL NOTES:
- ALL FLOOR PLANS SUBJECT TO FIRE MARSHAL APPROVAL
 - NO LOADING THROUGH GUEST HALLWAY
 - MUST KEEP CLEAR PATH OF MINIMUM 6' TO ALL EXITS
 - ALL EXIT SIGNS & FIRE EQUIPMENT MUST BE VISIBLE

CITY VIEW
at METREON

CITY VIEW
PRESIDIO ROOM - RIGGING & TRUSS

EVENT:	
VENUE: CITY VIEW at METREON	
SCALE: 1:215	SHEET: P-1.3
PRINT SIZE: 11x17	



RIGGING LEGEND	
	1/4 TON MOTOR (DOUBLE REEVED)
	RIGGING POINT

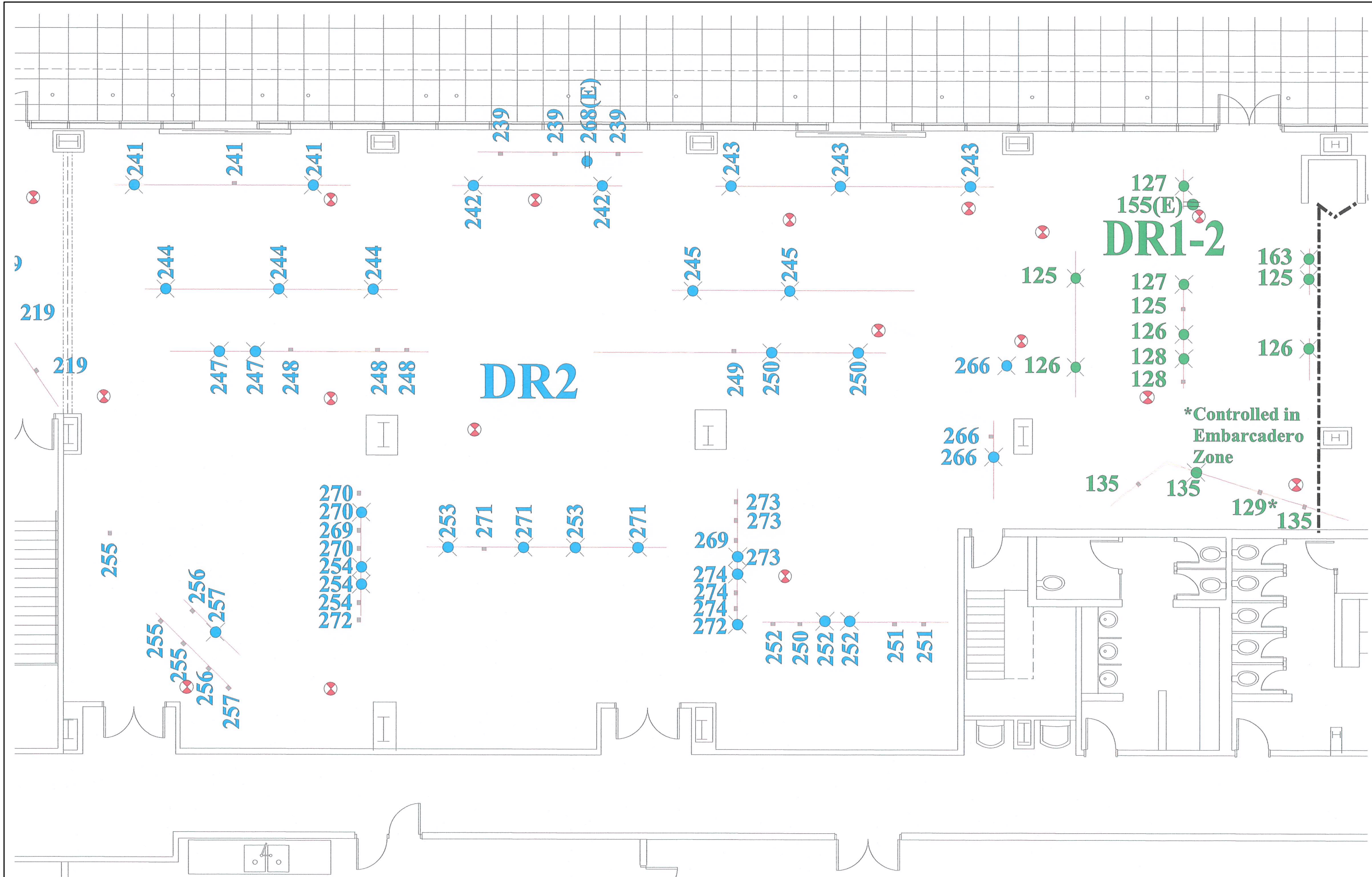
- GENERAL NOTES:
- ALL FLOOR PLANS SUBJECT TO FIRE MARSHAL APPROVAL
 - NO LOADING THROUGH GUEST HALLWAY
 - MUST KEEP CLEAR PATH OF MINIMUM 6' TO ALL EXITS
 - ALL EXIT SIGNS & FIRE EQUIPMENT MUST BE VISIBLE

CITY VIEW
at METREON

CITY VIEW

PRESIDIO ROOM - RIGGING & TRUSS (BLANK)

EVENT:	
VENUE: CITY VIEW at METREON	
SCALE: 1:215	SHEET: P-1.4
PRINT SIZE: 11x17	



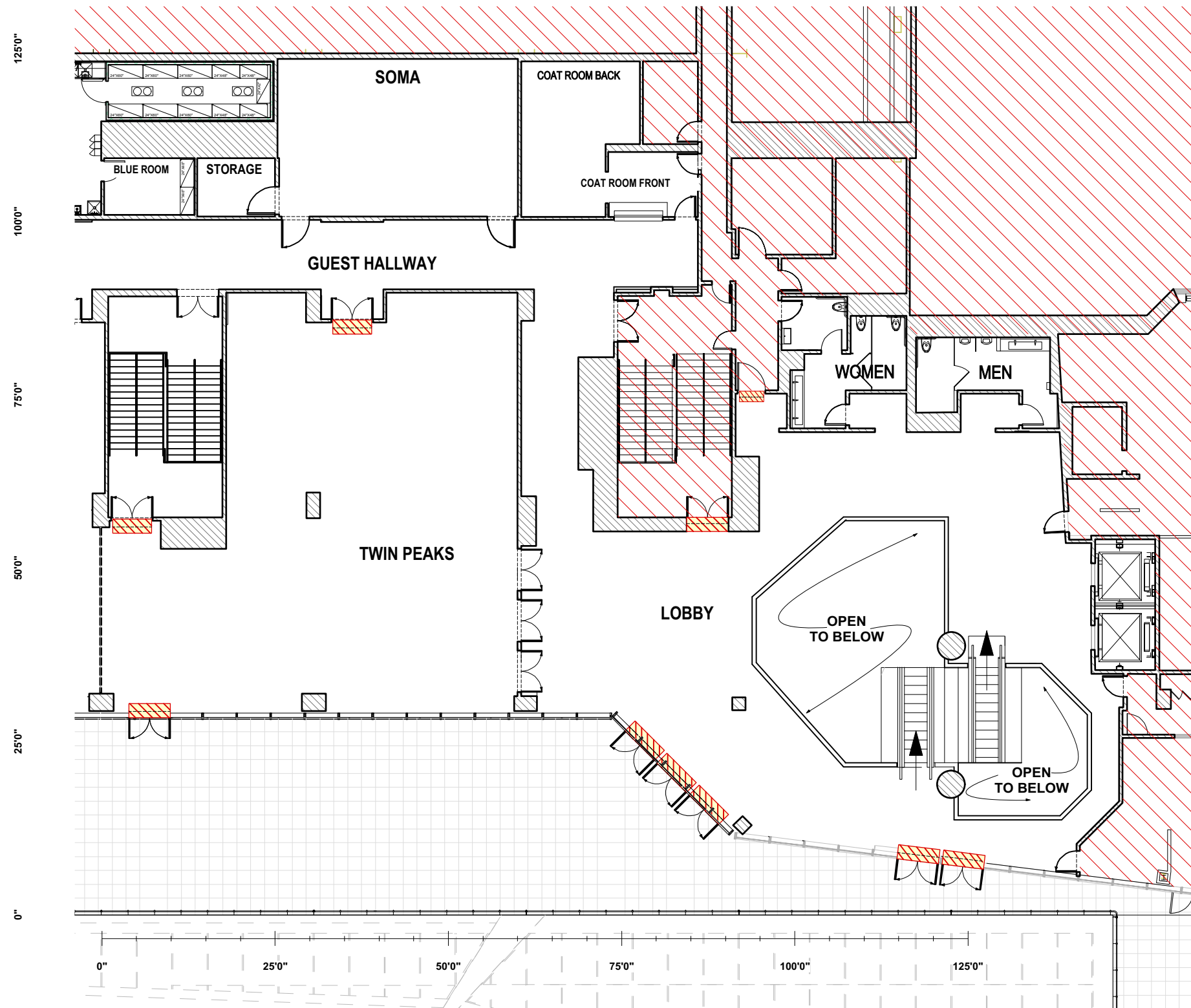
EMERGENCY LIGHT ONLY

CITY VIEW
at METREON

CITY VIEW

PRESIDIO ROOM - LIGHTING FIXTURES

EVENT:	
VENUE: CITY VIEW at METREON	
SCALE: 1:340	SHEET: P-1.5
PRINT SIZE: 11x17	

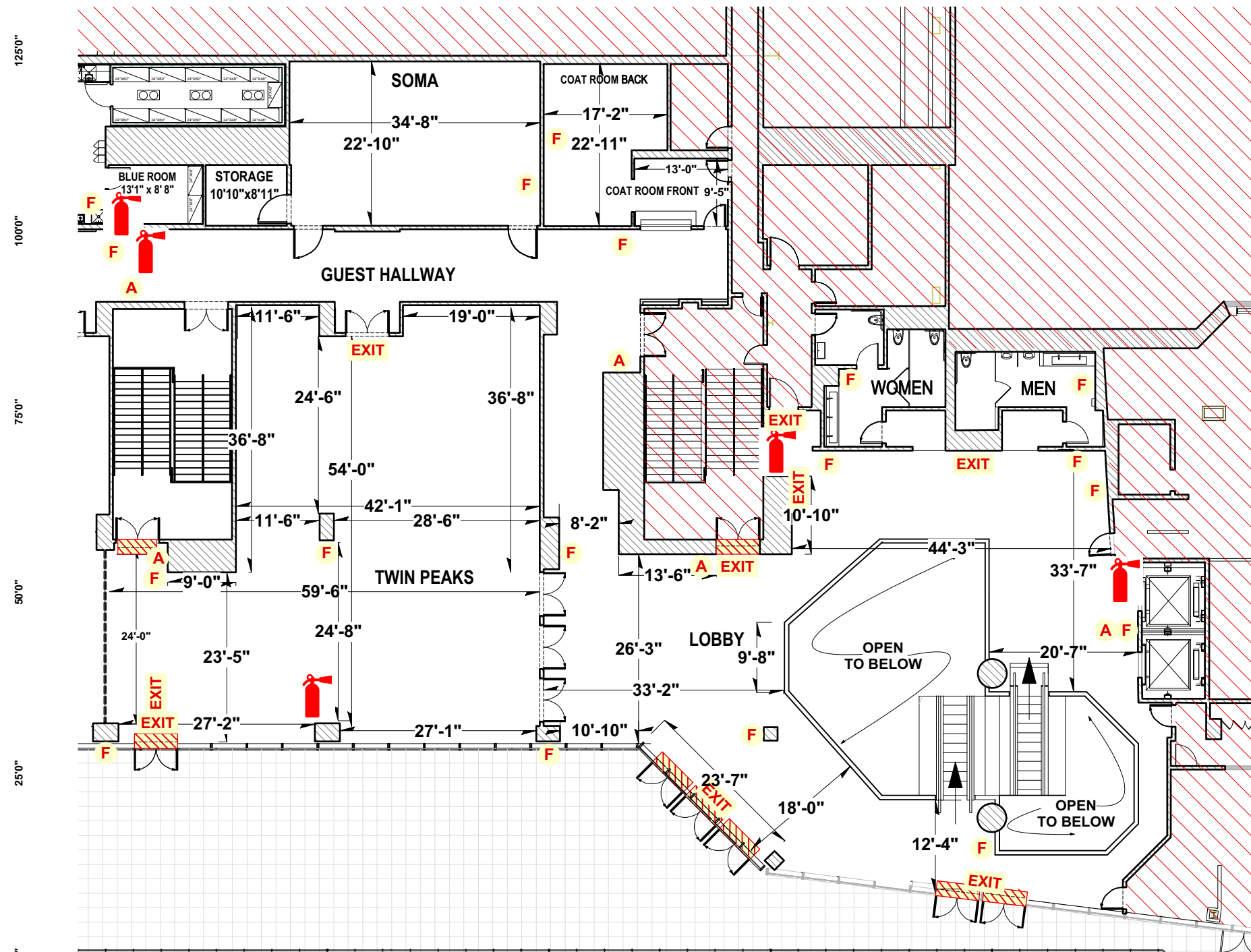


- GENERAL NOTES:
- ALL FLOOR PLANS SUBJECT TO FIRE MARSHAL APPROVAL
 - NO LOADING THROUGH GUEST HALLWAY
 - MUST KEEP CLEAR PATH OF MINIMUM 6' TO ALL EXITS
 - ALL EXIT SIGNS & FIRE EQUIPMENT MUST BE VISIBLE

CITY VIEW
at METREON

CITY VIEW
TWIN PEAKS ROOM & LOBBY - BLANK

EVENT:	
VENUE: CITY VIEW at METREON	
SCALE: 1:215	SHEET: T-1.0
PRINT SIZE: 11x17	



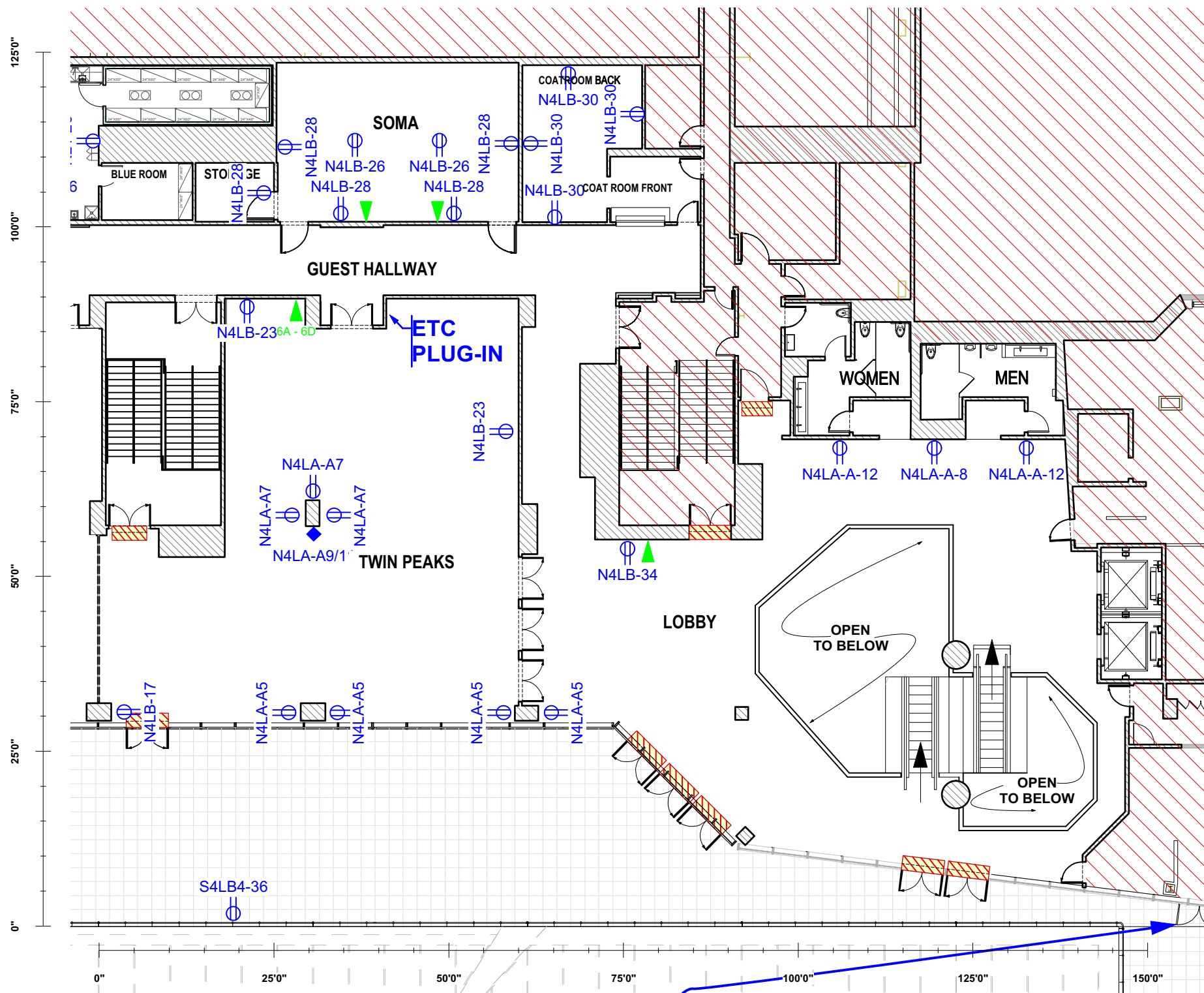
SAFETY / FIRE LEGEND	
EXIT	EXIT SIGN
	FIRE EXTINGUISHER
A	FIRE ALARM CALL BOX
F	FIRE ALARM STROBE




- GENERAL NOTES:
- ALL FLOOR PLANS SUBJECT TO FIRE MARSHAL APPROVAL
 - NO LOADING THROUGH GUEST HALLWAY
 - MUST KEEP CLEAR PATH OF MINIMUM 6' TO ALL EXITS
 - ALL EXIT SIGNS & FIRE EQUIPMENT MUST BE VISIBLE

CITY VIEW
at METREON

CITY VIEW
TWIN PEAKS ROOM & LOBBY - DIMENSIONS

EVENT:	
VENUE: CITY VIEW at METREON	
SCALE: 1:215	SHEET: T-1.1
PRINT SIZE: 11x17	



ELECTRIC / DATA LEGEND	
	DATA CONNECTION PORTS
	20amp DUPLEX OUTLET
	L6-30 208v TWIST LOCK OUTLET

ELECTRICAL NOTES

- CAMLOCK SERVICES**
 - USE OF CAMLOCK SERVICE MUST BE ARRANGED WITH VENUE STAFF PRIOR TO INSTALL VIA THE PRODUCTION QUESTIONNAIRE
 - ALL CAMLOCKS ARE PANEL MOUNTED FEMALE CONNECTIONS (5-WIRE SYSTEM; GROUND & NEUTRAL ARE NOT "TURNED")
- LIGHTING CONTROL PLUG-IN INTERFACE (ETC PLUG-IN)**
 - CONNECTION TO SYSTEM IS RJ-45 (ETHERNET)
 - SYSTEM PROTOCOL IS ANSI E1.31 sACN (Scanning ACN)
 - USE 10.101.90.XXX SECTION OF IP RANGE
 - ANY OF THE 3 PORTS AROUND THE VENUE CAN CONTROL THE WHOLE SYSTEM

NORTH TERRACE
 2 - 3Ø 100amp CAM-LOCK SERVICES
 1 - 3Ø 200amp CAM-LOCK SERVICE
TOTAL 3Ø 400AMPS

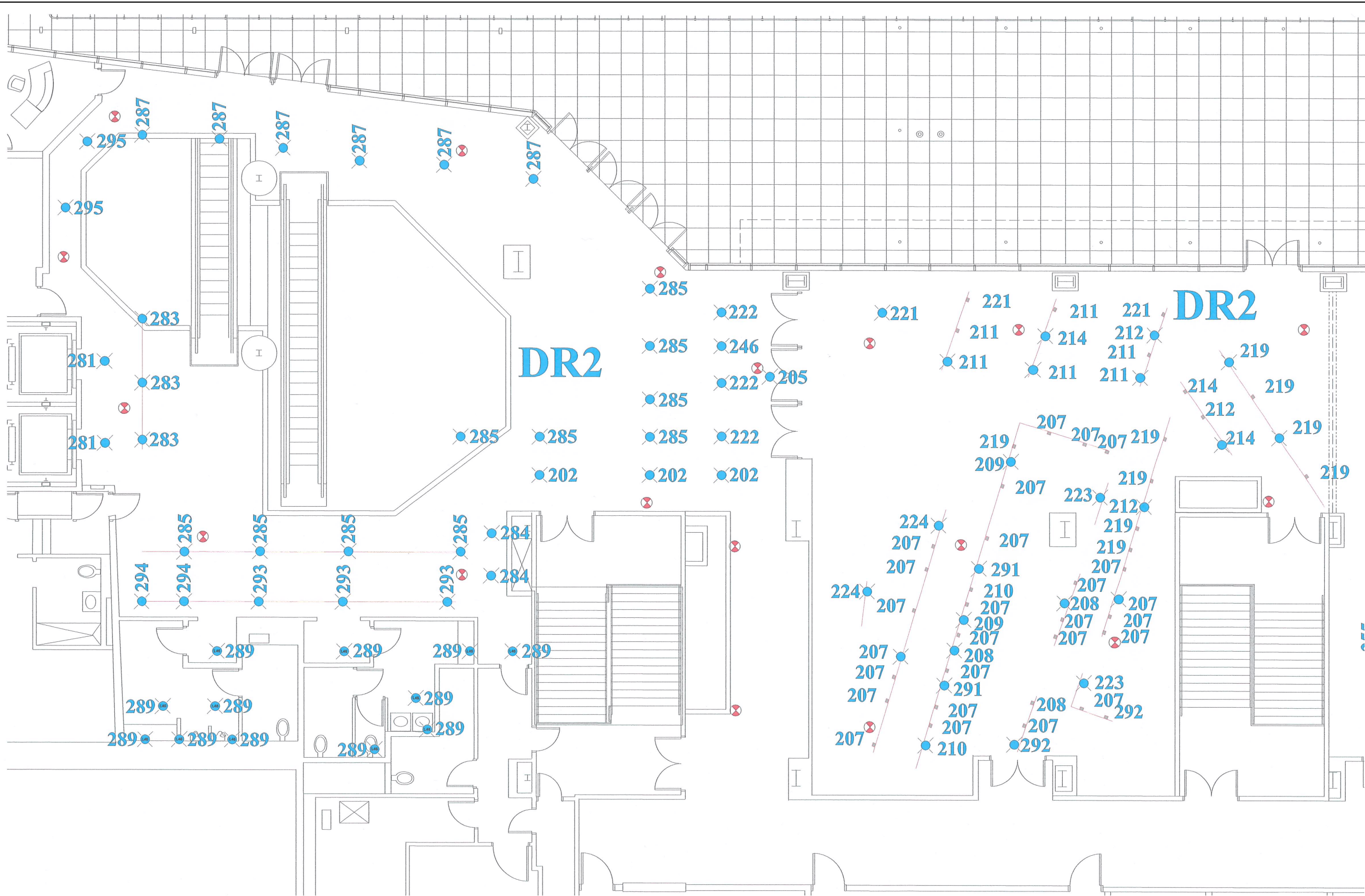
- GENERAL NOTES:**
- ALL FLOOR PLANS SUBJECT TO FIRE MARSHAL APPROVAL
 - NO LOADING THROUGH GUEST HALLWAY
 - MUST KEEP CLEAR PATH OF MINIMUM 6' TO ALL EXITS
 - ALL EXIT SIGNS & FIRE EQUIPMENT MUST BE VISIBLE

CITY VIEW
 at METREON

CITY VIEW

TWIN PEAKS ROOM & LOBBY - ELECTRICAL & DATA

EVENT:	
VENUE: CITY VIEW at METREON	
SCALE: 1:215	SHEET: T-1.2
PRINT SIZE: 11x17	



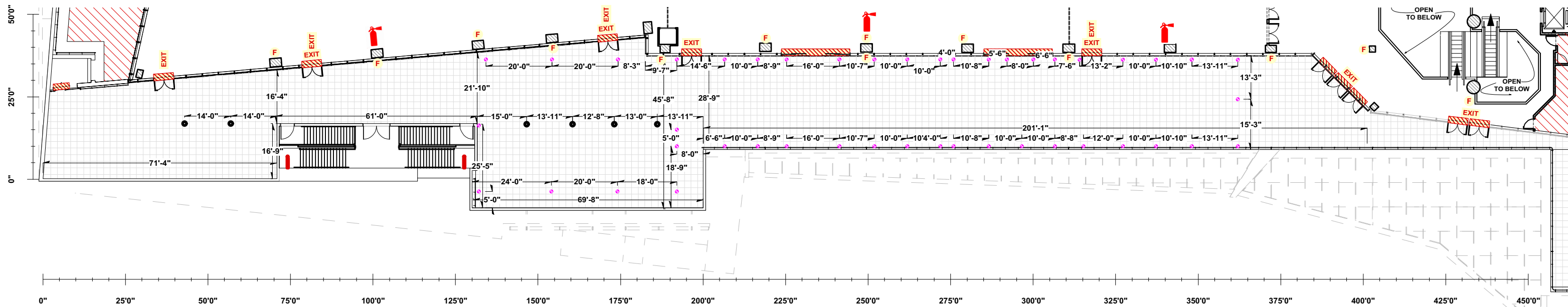
CITY VIEW

at METREON

CITY VIEW

TWIN PEAKS ROOM & LOBBY - LIGHTING FIXTURES

EVENT:	
VENUE:	CITY VIEW at METREON
SCALE:	1:340
PRINT SIZE:	11x17
SHEET:	T-1.3



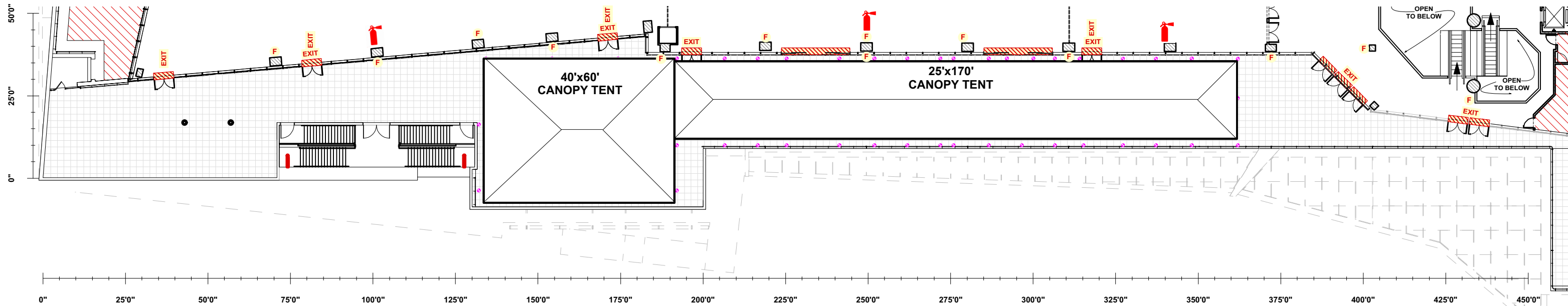
SAFETY / FIRE LEGEND	
	HANGING EXIT SIGN
	FIRE EXTINGUISHER
	FIRE ALARM CALL BOX
	FIRE ALARM STROBE


- GENERAL NOTES:
- ALL FLOOR PLANS SUBJECT TO FIRE MARSHAL APPROVAL
 - NO LOADING THROUGH GUEST HALLWAY
 - MUST KEEP CLEAR PATH OF MINIMUM 6' TO ALL EXITS
 - ALL EXIT SIGNS & FIRE EQUIPMENT MUST BE VISIBLE

CITY VIEW
at METREON

CITY VIEW
TERRACE - DIMENSIONS

EVENT:	
VENUE: CITY VIEW at METREON	
SCALE: 1:340	SHEET: TER-1.1
PRINT SIZE: 11x17	



SAFETY / FIRE LEGEND	
EXIT	HANGING EXIT SIGN
	FIRE EXTINGUISHER
A	FIRE ALARM CALL BOX
F	FIRE ALARM STROBE

- GENERAL NOTES:
- ALL FLOOR PLANS SUBJECT TO FIRE MARSHAL APPROVAL
 - NO LOADING THROUGH GUEST HALLWAY
 - MUST KEEP CLEAR PATH OF MINIMUM 6' TO ALL EXITS
 - ALL EXIT SIGNS & FIRE EQUIPMENT MUST BE VISIBLE

CITY VIEW
at METREON

CITY VIEW
TERRACE - TENTS

EVENT:	
VENUE: CITY VIEW at METREON	
SCALE: 1:340	SHEET: TER-1.2
PRINT SIZE: 11x17	